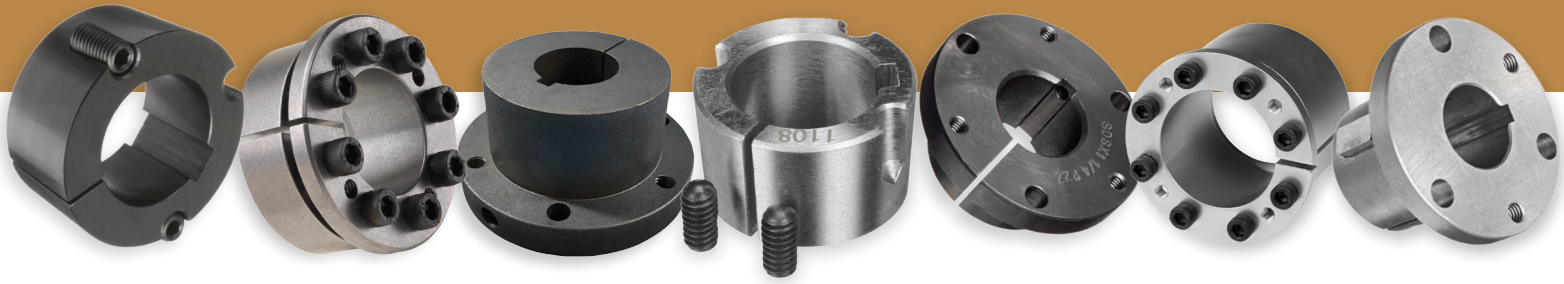


# BUSHINGS LINE CARD



## QD (QUICK DISCONNECT)

- Finished w/Keyway
- Finished w/No Keyway
- Minimum Plain Bore
- Re-Boreable
- Weld-On QD Hubs
- QD Bushing Bolts

## MATERIAL TYPES

- Cast Iron
- Steel
- Ductile Iron
- Cast Steel
- Powder Metal
- Sintered Steel

## QD IDLER

- Ball Bearing
- Needle Bearing

## TAPER LOCK

- Finished Bore
- Finished w/Keyway
- Rough Stock
- Re-Boreable
- Hubs & Adapters

## MATERIAL TYPES

- Steel
- Sintered Steel
- Stainless Steel
- Cast Iron
- Ductile Iron

## TAPER LOCK IDLER

- Ball Bearing
- Needle Bearing

## KEYLESS

- Cap Screw Clamping
- Collar Nut Clamping
- Hex-Head Screw Clamping
- Hex Nut
- Shrink Discs
- Self-Locking Rings
- Flanged & Non-Flanged
- Inch & Metric

## MATERIAL TYPES

- Steel
- Carbon Steel
- Corrosion Resistant Steel

## OTHER BUSHINGS

- Split Taper Bushings
- Split Taper Hubs
- Variable Pitch Bushings
- Idler Bushings
- Sleeve Bushings
- Flange Bushings
- FHP Bushings
- Bronze Bushings

## TOP BRANDS WE OFFER



If you don't see the brand or part you are looking for, please contact us. We have access to many other manufacturers and products.

**ISC Companies**  
12905 Hwy 55 W  
Minneapolis, MN 55441  
763-559-0033

**ISC Companies**  
1100 W Russell St  
Sioux Falls, SD 57104  
605-336-3471

**Adams-ISC**  
2090 Deadwood Ave  
Rapid City, SD 57702  
605-343-9393

